

# Brampton **Grow Green** an Environmental Master Plan

Provincial EAC Symposium  
May 3, 2014

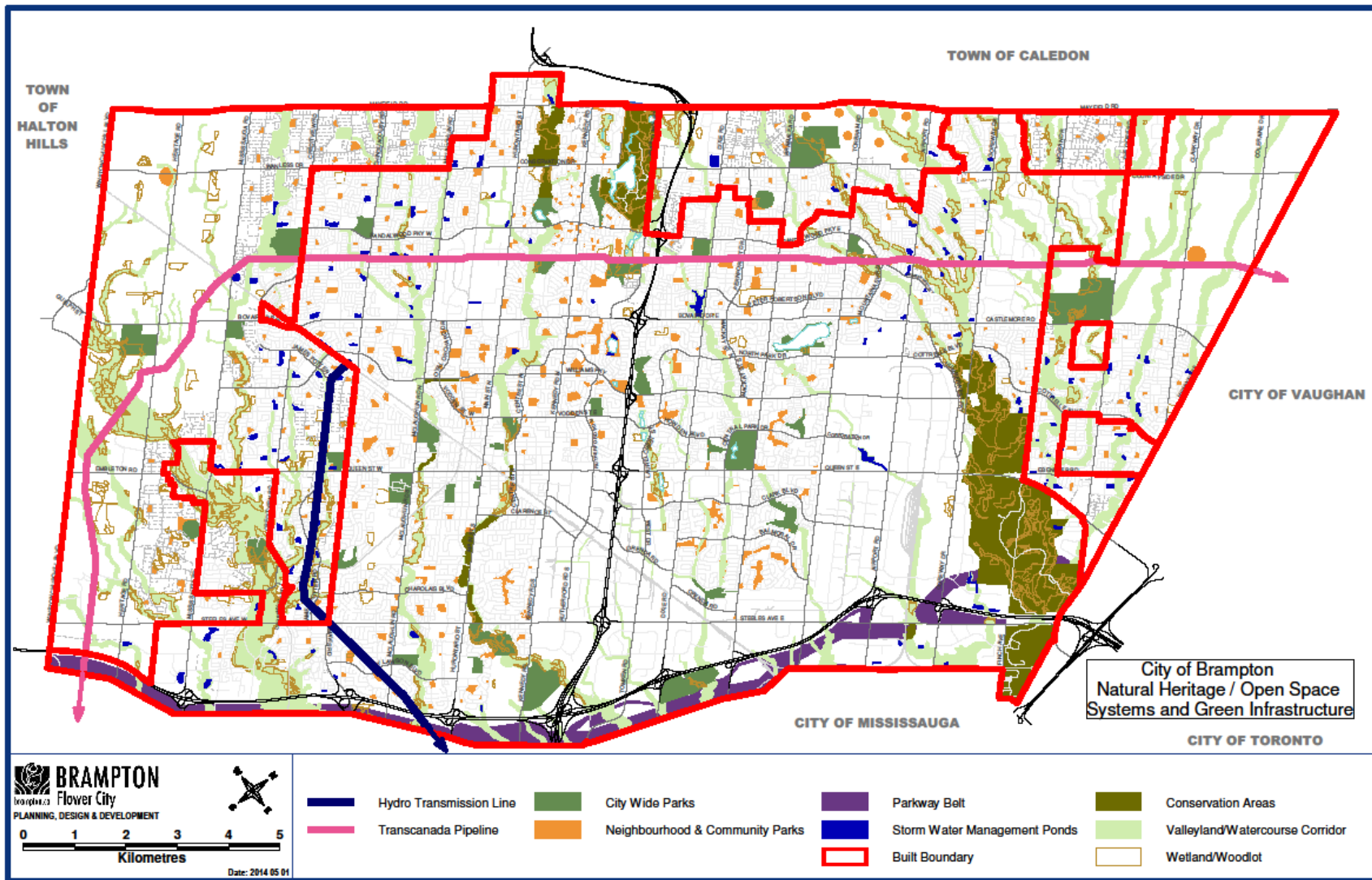
Flower City is our heritage. City-building is our business.

# BRAMPTON FAST FACTS

- Brampton is 9<sup>th</sup> largest city in Canada, 4<sup>th</sup> largest in Ontario and 3<sup>rd</sup> largest in GTA
- 550,000 om 2-14 and will grow 843,000 people by 2031.
- Young city with a median age of 35 – younger than 10 most-populated cities in Canada, Ontario and Toronto region
- Residents born outside of Canada exceeds 50% of population
- Immigration influences growth, diversification, labour force, employment, household income, business enterprises and institutions
- 89 languages spoken in Brampton

# BRAMPTON NATURAL CHALLENGES

- Brampton covers 27,000 hectares or 10,500 square miles
  - 18,000 ha in the built boundary (2006)
  - 9,000 ha of Greenfield
  - 234 ha (500 acres) in Greenbelt
- 4,600 ha Natural Heritage System – 2700 ha City owned – 960 ha owned by Conservation Authorities
  - 4000 ha valleylands (15%); 1300 ha woodlands (5%) and 55 ha wetlands (2%)
- 2100 ha of tableland parklands
- 225 km of pathways (on-road, multi-use off-road, parks and natural areas)



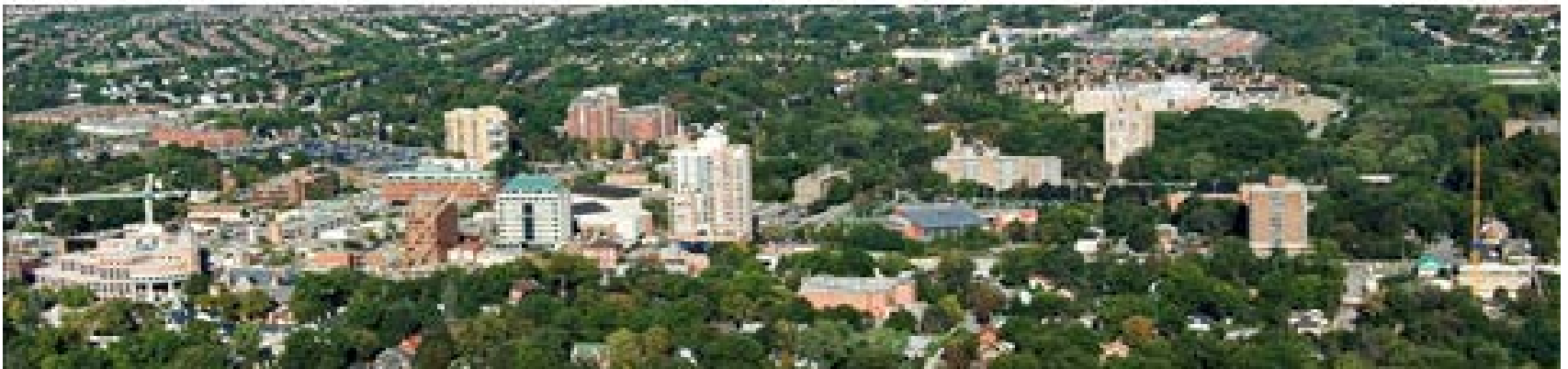
Flower City is our heritage. City-building is our business.



**BRAMPTON**  
Flower City



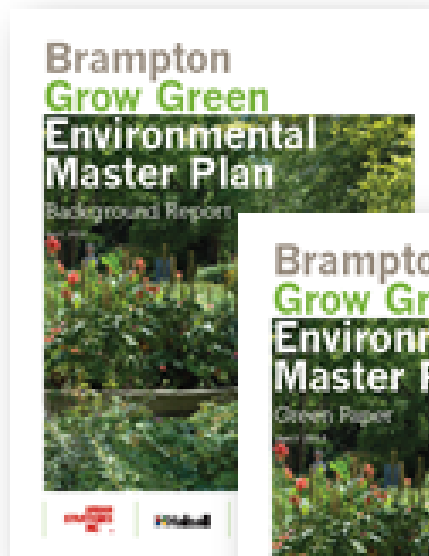
what is Brampton Grow Green ?



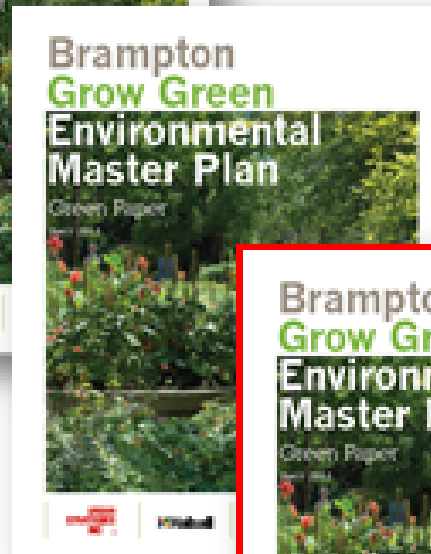
Flower City is our heritage. City-building is our business.

- **Connected to and Implements the City's Strategic Plan** -- Strategic Priority: Preserving – Environmental Stewardship
- **An Environmental Sustainability Framework** that informs future City decisions.
- **Increased internal and external awareness** of Brampton's sustainability initiatives
- **Builds Constituency of Stakeholder support**, including a contingent of stewards and new partnerships to support and lead the implementation of the EMP.
- **Includes tailored benchmarks and quantifiable targets** for measuring results.
- **Identifies Corporate Strategies and mechanisms** for on-going inter-departmental dialogue within the City.
- **Includes actions for the City and the Community** tied to each metric to advance progress towards reaching environmental goals

## The EMP: A Family of Documents



Background Report  
April 2012



Green Paper  
April 2013



Implementation Action Plan

- Action-driven
- A decision making tool
- Streamlined information to support decision making and guide next steps



## Issues

Identify the sustainability Issues, challenges and opportunities (eg. extensive automobile usage and high CO2 emissions) facing the City.



## Directions

Determine sustainability goals, objectives and policies (eg. reduce vehicle km travelled per person) that address the Issues.



## Benchmarks & Targets

Establish Benchmarks (eg. Brampton Transit revenue or residential access to transit service) and Targets (eg. increase transit revenue by 15% by 2015 or ensure 90% of residences have transit service within 500m with service every 20 minutes) that yield a specific, quantifiable measurement of how well the City is meeting its Directions.



## Actions & Partnerships

Propose Actions (eg. adding routes to Brampton Transit's network and increasing the frequency of buses on several routes) and Partnerships (eg. working with private employers to provide free transit passes to staff) that would help to meet the corresponding Targets and, ultimately, the Directions.



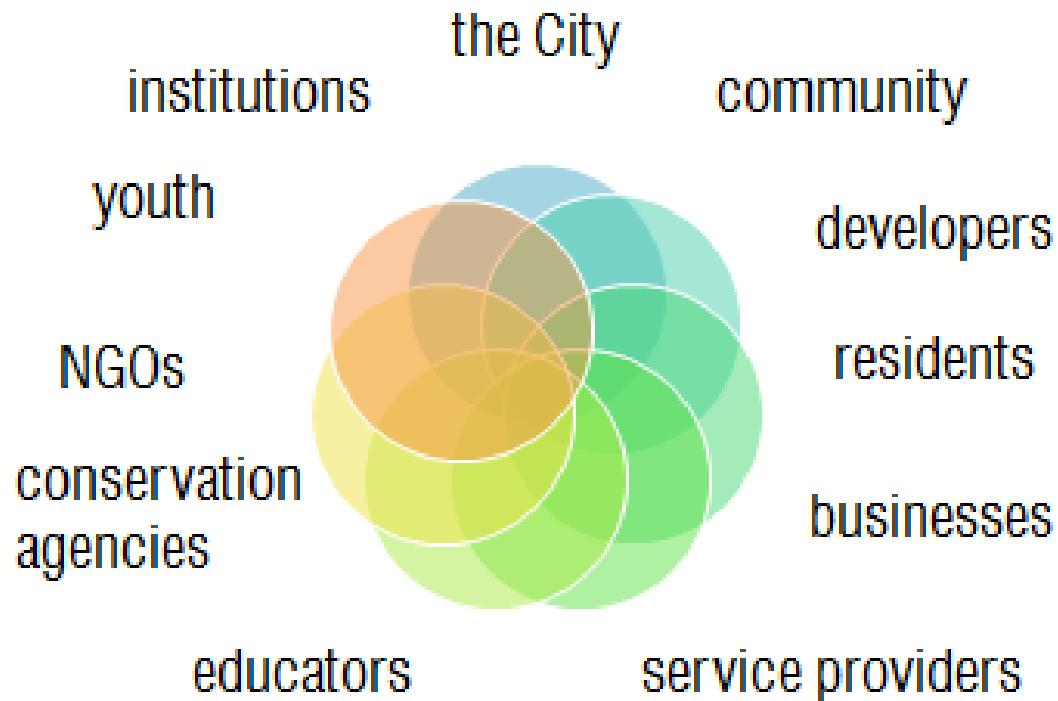
## Monitoring & Evaluation

Undertake Monitoring and Evaluation to determine whether Targets and Directions are being attained.





## key implementation partners



# Moving Forward.....

- The EMP has identified Community targets (residents, ICI and institutions) such as:
  - Greenhouse Gas emissions reductions
  - Energy and water conservation
  - Local food harvesting
  - Naturalization and urban forest improvements on private lands
- What needs to be done:
  - Update TOR – BEPAC and BCCC to become a community resource – outreach and education
  - Build/strengthen partnerships – Peel, CAs, Libraries, NGOs, etc
  - Communicate the EMP

# Thank You

## Questions?

[Susan.jorgenson@brampton.ca](mailto:Susan.jorgenson@brampton.ca)